

4.6 Graphing Tangent and Cotangent Functions

Date _____ Period _____

Graph each function using radians.

1) $y = 3\tan \theta$

2) $y = \frac{1}{2} \cdot \tan \frac{\theta}{2}$

3) $y = 2\cot\left(\theta + \frac{5\pi}{3}\right)$

4) $y = 3\tan\left(\theta + \frac{5\pi}{6}\right)$

5) $y = \cot \frac{\theta}{2}$

6) $y = \cot 2\theta$

7) $y = 2 + 4\tan \theta$

8) $y = 2\tan \theta$

9) $y = \tan \frac{\theta}{3} + 1$

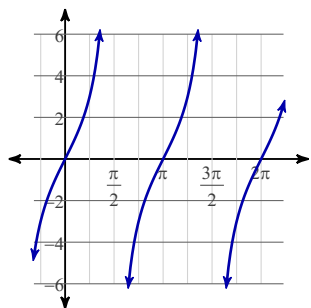
10) $y = 2\cot 2\theta + 2$

11) $y = \frac{1}{2} \cdot \cot\left(\theta + \frac{\pi}{6}\right)$

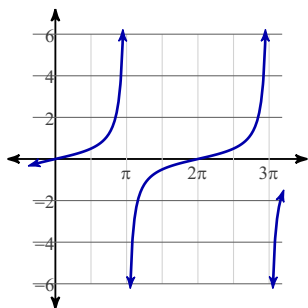
12) $y = 3\tan\left(\theta + \frac{\pi}{4}\right) + 1$

Answers to 4.6 Graphing Tangent and Cotangent Functions (ID: 1)

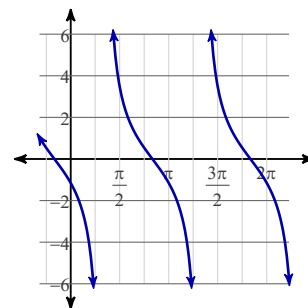
1)



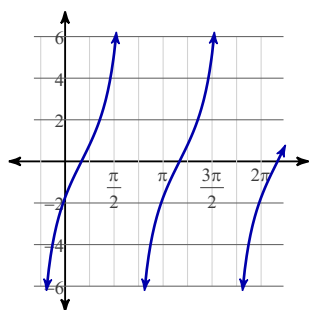
2)



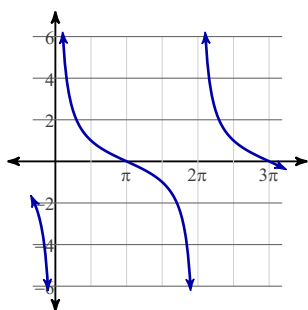
3)



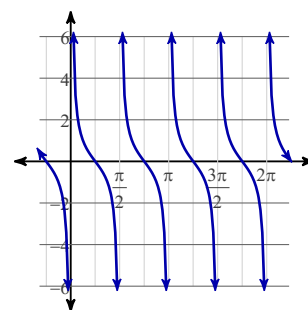
4)



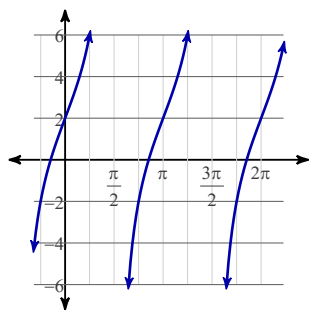
5)



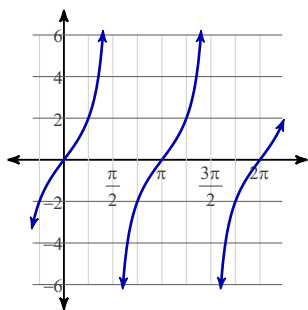
6)



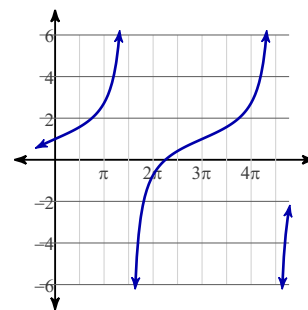
7)



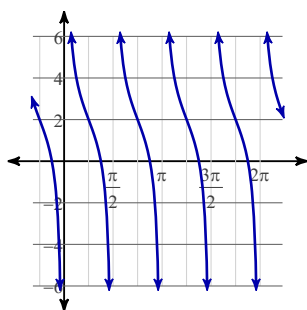
8)



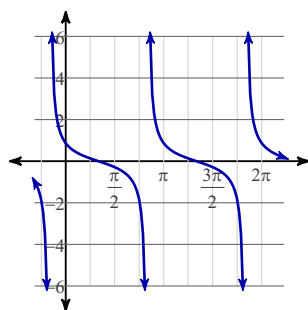
9)



10)



11)



12)

